

## INTRODUCTION TO OUR SERVICES

Telops measurement services offers on-demand access to our advanced products and industry-leading expertise. Benefits include:

- Testing camera capabilities prior to purchase
- Manage short-term data collection needs
- Access to state-of-the-art infrared cameras
- Technical support for experiment planning and execution
- Access to our professional team of engineers for camera operation and data processing

## OPTIONS

### ***Do it yourself***

Access the most advanced infrared cameras available on the market on a weekly rental basis.

### ***Let us help***

Our scientists can share their knowledge and experience so your team can get a head start with your rental.

### ***Let us operate***

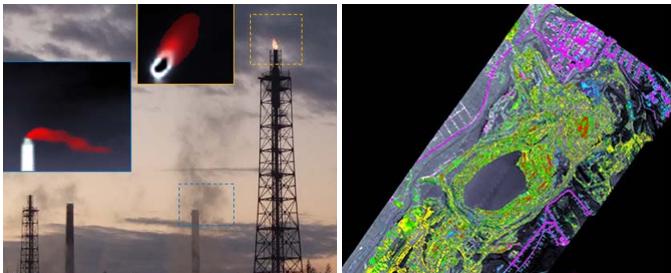
With hundreds of deployments in the field under our belt, we can help you execute your measurement campaign.

### ***Let us analyse***

With more than 20 years of algorithm development and know-how in infrared, multispectral, and hyperspectral imaging data analysis, we can quickly deliver decision quality data.

## OUR EXPERTISE IN APPLICATION

- Gas detection, Identification and Quantification
- Mineral Mapping
- Scientific Analysis



## OUR EXPERTISE IN OPERATION

- Ground-based
- Airborne



## OUR EQUIPMENT



Hyper Cam LW



Airborne Platform

Hyper-Cam	Window Size [Pixels x Pixels]	Spectral Range [μm]
Hyper-Cam LW	320 x 256	7.7 - 11.8
Hyper-Cam CH4	320 x 256	7.4 - 8.3



FAST M3k

Multispectral	Frame Rate [Hz]	Spatial Resolution [Pixels x Pixels]	Spectral Range [μm]
MS M2k	800	320 x 256	3 - 5.5
MS M100k	100	640 x 512	3 - 4.9

FAST	Frame Rate [Hz]	Spatial Resolution [Pixels x Pixels]	Spectral Range [μm]
FAST M3k	3100	320 x 256	3 - 5.5
FAST M2k	1910	320 x 256	3 - 5.5
FAST M1k	1012	640 x 512	1.5 - 5.4
FAST M100hd	105	1280 x 1024	3 - 5
FAST M350	355	640 x 512	1.5 - 5.4
FAST M200	210	640 x 512	1.5 - 5.1
FAST V1k	1012	640 x 512	7.5 - 11.5
FAST L200	234	640 x 512	7.7 - 9.3



MS M2k

## OUR TEAM IN ACTION



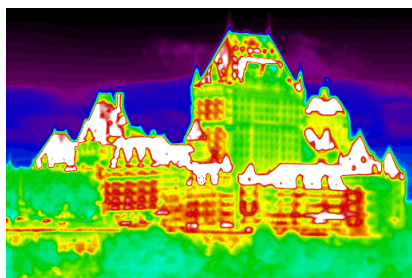
Condition Monitoring



Gas Detection



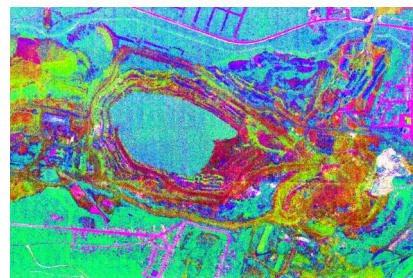
Airborne Survey



Thermography



Pollutant Monitoring



Mineral mapping

FOR MORE INFORMATION | [TELOPS.COM](http://TELOPS.COM)

**TELOPS HEADQUARTERS**  
 contact@telops.com  
 Tel.: +1 (418) 864-7808

**MEASUREMENT SERVICES**  
 sylvain.gatti@telops.com  
 Tel.: +1 (418) 864-7808 x462

**TELOPS EUROPE**  
 eric.guyot@telops.com  
 Tel.: +33 1 70 27 71 34

**TELOPS CHINA**  
 luoyi@telops.com  
 Tel.: +86 139 1065 8965